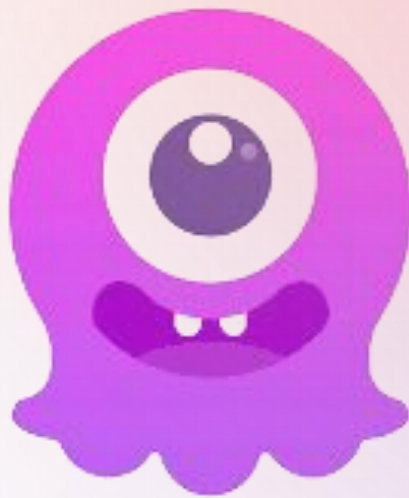




CHAMET

MAKE CHAT BORDERLESS



Agency Registration Link

[https://h5.ichamet.com/webH5/inviteAgent/bind.html?
companyId=179409](https://h5.ichamet.com/webH5/inviteAgent/bind.html?companyId=179409)

www.chametliveagency.com



REGISTER AS AN AGENCY IN CHAMET

1. Open **Agency Registration Link**
2. Enter Your Phone Number
3. Click on "Send"
4. Enter the Verification Code
5. Enter Password
6. Re-enter Password
7. Click on Register

Agency Registration Link

The screenshot shows a registration interface for Chamet. At the top, there's a header with a 'Party' logo and a banner that says 'Become an agent of Chamet and earn \$500 a week'. Below the banner, there are four input fields: 'Phone number' (with a dropdown for '+91'), 'Enter Verification Code' (with a 'Send' button), 'Password', and 'Re-Enter Password'. At the bottom, there are two buttons: a large orange 'Register' button and a smaller 'Login' button.

We will provide a management system

[https://h5.ichamet.com/webH5/inviteAgent/bind.](https://h5.ichamet.com/webH5/inviteAgent/bind.html?companyId=179409)

[html?companyId=179409](https://h5.ichamet.com/webH5/inviteAgent/bind.html?companyId=179409) to you, which helps you monitor your hostesses and sub-agents under your revenue, bind hostesses or su-agents under your agency and so on. Thus, you should master the management system because you will need to operate your team independently.



To complete the process of becoming a Chamet Agent, the agent account needs to bind their account with the Metwallet App.

Below are the steps, on How To Connect to Metwallet:

1. Login through phone number/email address.
2. After entering the phone number/email address, click on "Next".
3. After completing the signup process.
4. Click on the three lines in the top left corner.
5. 1st step add basic details.
6. In 2nd step verify with any government ID and upload the front portion of that ID.
7. In 3rd step in the fully verified section submit the address from the government ID
8. Complete the process and you will get registered.

NOTE: It is important to use the same email address or phone number while registering on the Chamet, Metwallet, and AND app. Also the same Government ID at the time of Bank Withdrawal

- ♦
- ♦ An Agent needs to bind their CHAMET agency account with the METWALLET App.
- ♦ A Host must bind their CHAMET account with the METWALLET and AND app. The AND app link will be shared by the AGENT ONLY.
- ♦ For Indian Users: They can directly use Epay and bank Withdrawal.

Metwallet Link ➤



CONTENTS

1

ABOUT US

2

**COMMISSION &
SETTLEMENT**

3

RULES

4

REGISTRATION



ABOUT US

It is Glad that you are intrested in
Chamet!





ABOUT Chamet

We look forward to cooperating with you as soon as possible!

1

Here is an experience Internet enterprise which was found in 2013, our products involve in tourism, entertainment, education, social media, and so on. There are over 200 employees, who serves users or customers from all over the world.

2

Chamet is one of our extraordinary products. It has been running for 4 years. Our daily active users are around 1,000,000 now and it keeps growing everyday. We connect people with different cultural backgrounds to make chat borderless.

3

Not only can we provide an amazing platform for you hostesses to earn, but also an extraordinary platform to let you strengthen your team because you can invite and bind some other agencies with you here. Your revenue will grow by increasing the number of sub-agents, which is our most significant features.



2

COMMISSION & SETTLEMENT





EARNING OF HOSTESSES

1 Earning of Hostesses

Hostesses earn Beans through video calls and gifts.

- Host can charge between **1,200 to 6,000 Beans per minute for video calls.**
- Host can also **receive Beans as gifts**, which vary in value.

2 The Value of the Beans

10,000 Beans = 1 USD

COMMISSION RATIO OF AGENCIES

The agent daily commission ratio is determined by your Hostesses and sub-agents total earning in the recent 30 days.

The total daily revenue is made up of two parts:

1 PART ONE

The daily cashable amount of all his hostesses.

2 PART TWO

Total daily revenue of all his sub-agents.



THE COMMISSION RATIO OF AGENCIES

The agent daily commission ratio is determined by your Hostesses and sub-agents total earning in the recent 30 days.

Check the chart below to know the details:

Class	A	B	C	D	E	F	G	H	K
Total earning in the recent 30 days	USD ≥500	USD 1,500	USD 5,000	USD 15,000	USD 50,000	USD 150,000	USD 500,000	USD 1,500,000	USD 50,000,000
Commission Ratio	5 %	10 %	15 %	18 %	20 %	22 %	24 %	26 %	30 %

*For new agents [Registration duration is less than 30 days], the agents daily commission ratio is determined by your “hostesses” and “sub-agents” total earning from your registration day to yesterday

CALCULATION OF YOUR COMMISSION

Your total daily amount of commission is also made of two parts:

1 Part of Hostesses

Your corresponding commission ratio *total daily cashable of all of your hostesses

2 Part of Sub-agents

Your daily commission fees from EACH sub-agent: { Your daily commission ratio- your sub-agent’s daily commission ratio } *the sub-agent’s total daily revenue

[you may need to calculate this part more than once depending on how many sub-agents you have]

[The commission ratio is floating according to the total earning of the recent 30 days]



EXAMPLE OF CALCULATION OF AGENT'S COMMISSION

CASE 1



*Case 1: A have no own hostesses, just want to earn from the sub-agents(B、C、D)

Calculation:

A's Total earning in the recent 30 days = $3338.88 + 15,888.68 + 158,000.87 = 177,228.43\$$ $\xrightarrow{\text{A's ratio today}}$ 22%

A's Commission today from B: $22\% - 10\% = 12\% * 100 = 12\$$;

A's Commission today from C: $22\% - 18\% = 4\% * 500 = 20\$$;

A's Commission today from D: $22\% - 22\% = 0\% * 5000 = 0$;

A's Total Commission today: $12 + 20 + 0 = 32\$$

CASE 2



*Case 2: A have own direct hostesses, A's direct hostesses'total earning in the recent 30 days is 150,000.88\$

Calculation:

A's Total earning in the recent 30 days = $3338.88 + 15,888.68 + 158,000.87 + 150,000.88 = 327,229.31\$$ $\xrightarrow{\text{A's ratio today}}$ 22%

A's Commission today from B: $22\% - 10\% = 12\% * 100 = 12\$$;

A's Commission today from C: $22\% - 18\% = 4\% * 500 = 20\$$;

A's Commission today from D: $22\% - 22\% = 0\% * 5000 = 0$;

A's commission today from his own direct hostesses: $1500 * 22\% = 330\$$;

A's Total Commission today: $32 + 330 = 362\$$



SETTLEMENT & PAYMENT

1

- You can withdraw your earnings daily
- **Minimum Withdrawal Amount = 10 USD**
- The withdrawn amount will instantly go to your bound Metwallet.

2

- A hostesses **MUST** pass face verification.
- Bind her own phone number or Gmail.
- Must have valid Metwallet account under her Chamet account **BEFORE** withdrawing salaries.

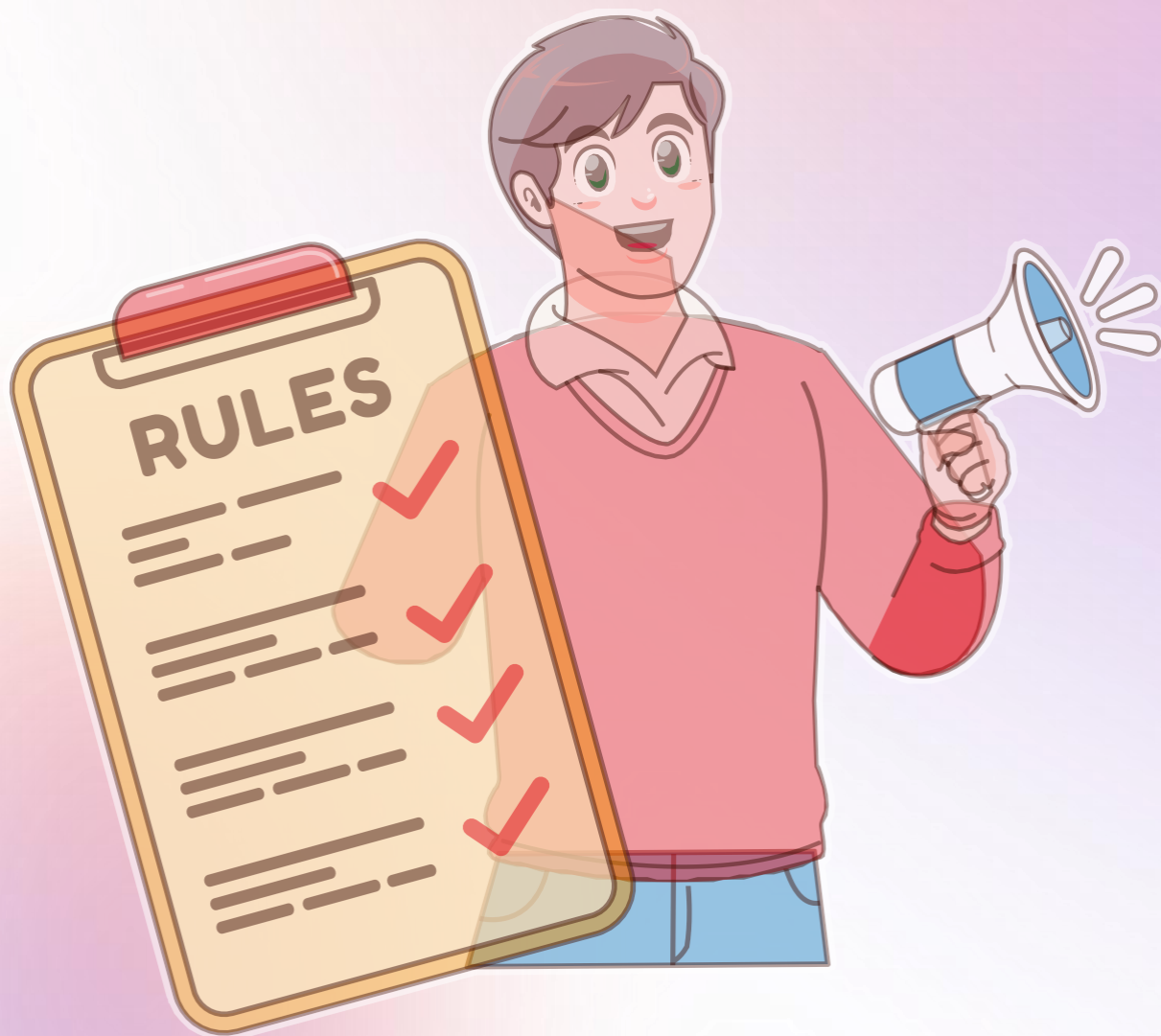
3

- Salaries go directly to hostesses.
- Commission fees are paid directly to agents.
- In the case of Indian hostesses, salaries are also sent directly to hostesses.
- For Bahrain, agents will receive their hostesses' salaries and pay them separately.



3

RULES





RULES FOR AGENCIES

1

It is not allowed to bind hostesses who have been working in Chamet already. We will stop cooperation and hold the payments as long as we find it.

2

It is not allowed to bring Chamet's hostesses to other Apps. We will stop cooperation and hold the payments as long as we find it.

3

Agency should not cut any payment of hostesses, we pay considerable commission separately.

RULES OF CASH - OUT

Apply to salary of hostesses and commission of agencies:

You can withdraw your yesterday's salary everyday.

- The cash-out amount must be $\geq \$10$.
- The withdrawal amount must be an integral multiple of 10, the
- remainder will be accumulated and cashed out in the next time when you withdraw.

If the callers request a refund from Google or Apple or other ways,

- we will deduct the corresponding amount from related hostesses.
- Agencies commission calculation update. The agent daily
- commission ratio is determined by your hostesses and sub-agents total earning in the recent 30 days.

For new agents [Registration duration is less than 30 days], the

- agents daily commission ratio is determined by your hostesses and sub-agents total earning from your registration day to yesterday.



RULES FOR HOSTESSES

Some violations would cause strict punishment such as banning the hostess from Chamet, confiscation of related agency's commission. The following situations are strictly forbidden!

- 1 A hostess register more than one account in Chamet
- 2 A hostess switches agency to others, or an agent entices hostesses inside Chamet to join his/her own agency.
- 3 A hostess presents pornographic content during **Live or Private video call**
- 4 A hostess who is under 18 years old.

CHAMET STANDARDS FOR HOSTESSES

Also, we use Chamet Standards to regulate some behaviour of hostesses. If they ignore the standards and warnings, which will cause the fact that no callers can find them until they correct unqualifies behaviours.



CHAMET STANDARDS FOR HOSTESSES

Our AI system helps us to do inspections and they are very sensitive, so please inform your hostesses of avoiding unqualified behaviours. Moreover, our AI system also can screen out hostesses who are not able to earn and then stop distributing calls for them, so you should not recruit hostesses who are not good at this profession because they will be dismissed anyway.

STANDARDS OF LIVE POSTERS AND OTHERS

1. *They should wear makeup or use a photo with beautification*
2. *They should use photo of themselves.*
3. *Their photos should be in high definition and with proper brightness.*
4. *Their photos should be with a tidy background.*
5. *They should dress decently [No revealing clothing ; no vulgar posture]*



STANDARDS OF LIVE DURATION

1. *Keep their face in the box all the time.*
2. *They should be in a brief but surrounding.*
3. *They should wear makeup and dress decently.
[No revealing clothing ; No vulgar posture ;
No pornographic behaviour]*
4. *They should use earphones.*
5. *They should not lie down during live streaming.
[It is forbidden to show the bed otherwise you
will be banned.]*





4

REGISTRATION

The screenshot shows a registration form on a laptop screen. The form includes the following fields and elements:

- Header:** A logo on the left and a message "livehosting invites you to be the agent of Chamet" on the right.
- Fields:** Username, Password, Re-Enter Password, Agency Name, Phone number (with a "+63" prefix), and Enter image verification code.
- Verification:** A "Send" button next to the "Enter Verification Code" field.
- Action:** A large "Bind" button at the bottom.



CHAMET AGENCY REGISTRATION

We will send you a registration link separately,
you will register click on this link

**[https://h5.ichamet.com/webH5/inviteAgent/bin
d.html?companyId=179409](https://h5.ichamet.com/webH5/inviteAgent/bin.d.html?companyId=179409)** and fill all the
required information in the form. You can start to
use the management system immediately after
successful registration.

HAVE ANY QUERY? FEEL FREE TO ASK QUESTIONS



support@chametliveagency.com



www.chametliveagency.com



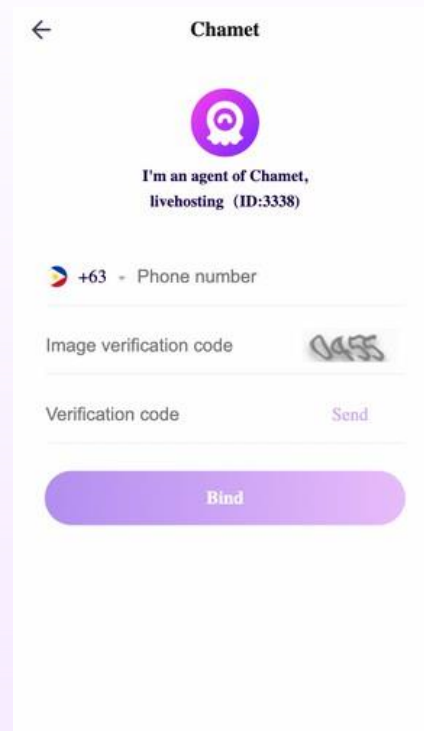
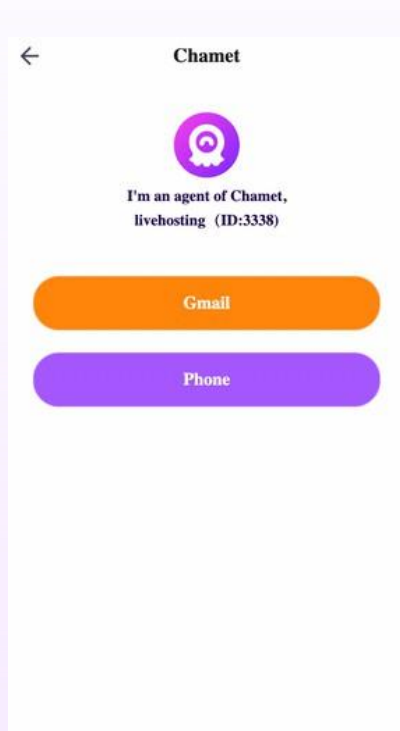
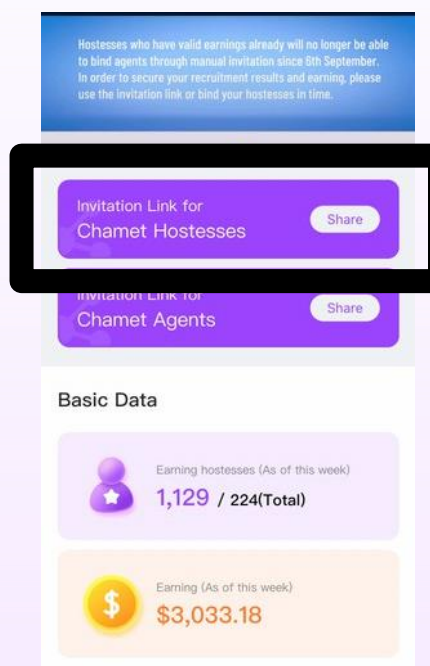
+91 7998977770



How To Invite Hosts

1. Use your "invitation link for Hostesses."
2. Bind their cellphone number / email and download the Chamet app from the webpage or Play Store.
3. Log in to their Chamet account with the same registered phone number / email.

By using your reference link and completing these steps, a hostess will become an official host under your agency.



Hostesses who have valid earnings already will no longer be able to bind agents through manual invitation. In order to ensure your recruitment results and earning, please use the invitation link or bind your hostesses in time.